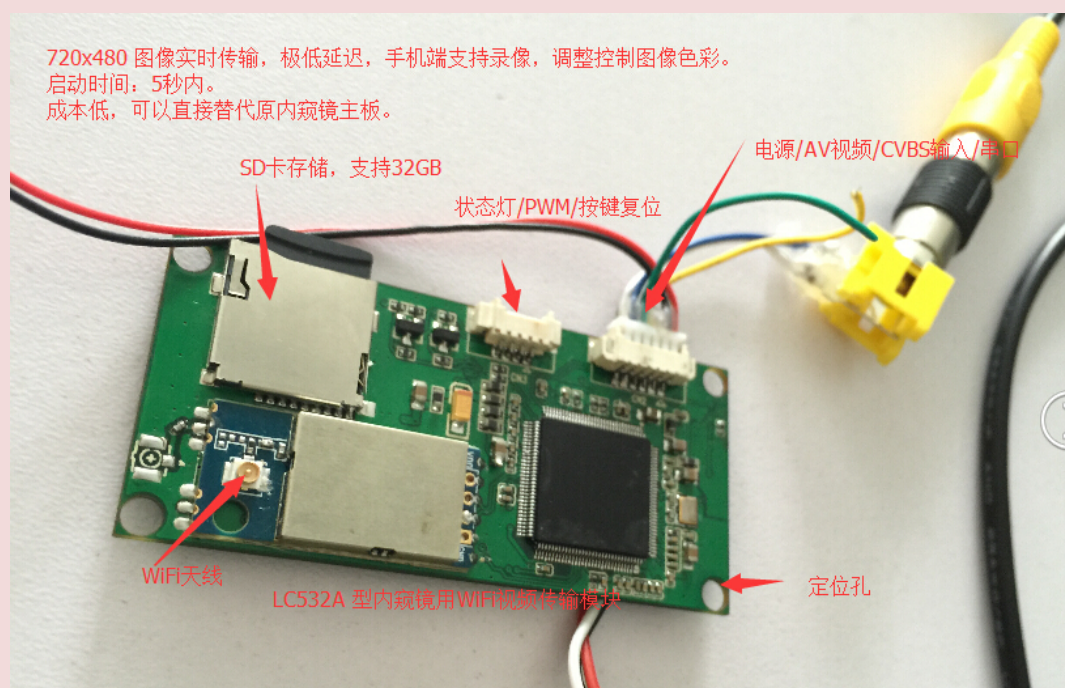


## WiFi 工业内窥镜专用图传模块 LC532B

- ✧ 图像分辨率: **D1, 720x576/720x480**, 不损失图像画面
- ✧ 视频格式: **最先进的 H264**, 图像更加流畅, 存储时间更长
- ✧ 启动时间: **快速启动设备: 3-5 秒**
- ✧ **WiFi 支持: 802.11bgn**, 空旷距离 **100 米**
- ✧ 视频输入: **NTSC/PAL 自适应**
- ✧ **App 软件支持: android/ios**
- ✧ 功耗控制: **可以电池供电, 250ma@5V**
- ✧ **WiFi 认证: FCC/CE**

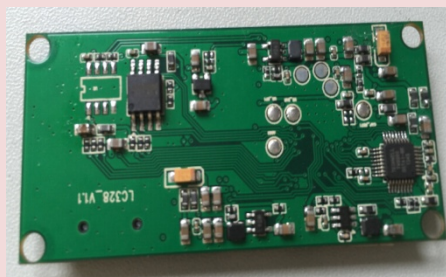
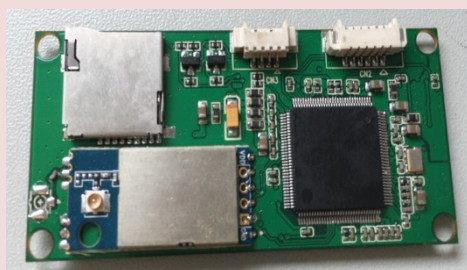


### Features:

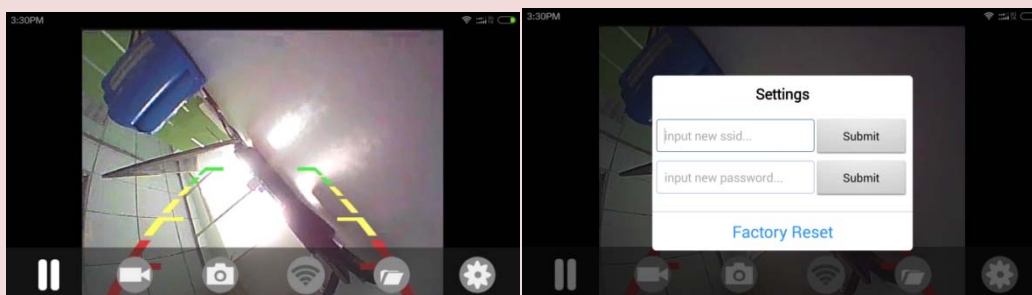
Module	LC532B
CPU	ARM ® CPU core - 32-bit RISC, up to 600MHz
CVBS	NTSC/PAL
VideoRecord	720x480@30FPS 720x576@25FPS
VideoFile Format	H.264 High Profile / MP4/AVI
Capture Res	D1
CapFile Format	JPEG
RealtimePre Res	VGA/QVGA
Network ADJ	Support , Video Stream Bitrate auto adjust

OP Temp -10~+50  
APP Cam802 , ios/android SDK  
WiFi Module 802.11 b/g/n , normal , remote distance <=100m  
Power Input 5-12V Input  
TV-OUT ( CVBS ) 1xCVBS  
PCB Size 30x60mm  
Audio Default not support  
3DNR Support  
Others 1xFactoryReset by button  
1xLED Stauts  
1xSDCard,support 32GB, Class 10  
1xUsart

LC532B MainBoad:



LC532B APP Snapshot:



灵卡技术 /LinkCard Tech

QQ: 1556631285

Email: [info@link-card.com](mailto:info@link-card.com)

PhoneNuber: (86 )0755 26405987

WebSite: [www.link-card.com](http://www.link-card.com)

Address: ZhuGuang Building 206,XiLi South Road ,Nanshan District,Shenzhen,GuangDong